

## Residents Encouraged to Report Home Damage After a Storm

Broward County is introducing a new program to help quickly identify areas of devastation after an emergency, even before damage assessment teams are able to canvass the County. It's easy and a great service to the community!

The Home Damage Assessment Program asks residents to report hurricane damage to their home as soon as it is safe to go outside by calling 3-1-1 or logging on to the Broward County Web site at [www.broward.org/hurricane](http://www.broward.org/hurricane) and clicking on Home Damage Assessment Program.

### Here's how it works:

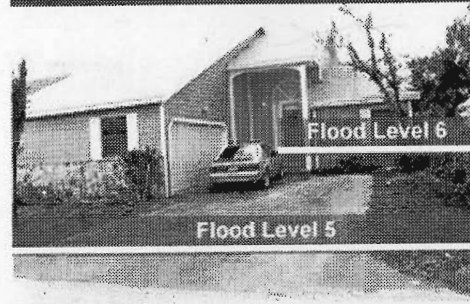
1. Print the Home Damage Assessment Photos or keep this flyer handy for reference.
2. After the storm passes and it's safe to go outdoors, survey the damage to your home and compare it to the homes in the pictures. Select the one that best represents the condition of your home for damage level and/or flood level. It doesn't matter if you live in a single family home, condo, townhouse, apartment, duplex or mobile home.
3. Call the Broward County Hurricane Hotline at 3-1-1 to phone in a damage assessment report. If you have power and access to the Internet, return to [www.broward.org/hurricane](http://www.broward.org/hurricane), click on Damage Assessment Program, and click on "Report Your Damage."
4. You will need to provide your street address, city and zip code, and the picture number that best represents the level of damage to your home.

Remember, you must have access to the photos to make a report, as Hurricane Hotline call takers will only be able to accept numbers "1-4" as damage levels and "5-6" for flood levels.

Resident reports will provide a critical early indication of where major damage has occurred. These reports do not constitute a request for individual assistance and do not replace the normal grid-by-grid assessments performed by County assessment teams.

**BR** **WARD**  
**COUNTY**  
**FLORIDA** For questions about the Home Damage Assessment Program, call 954-831-4000

Level 1 - No or minor damage; habitable



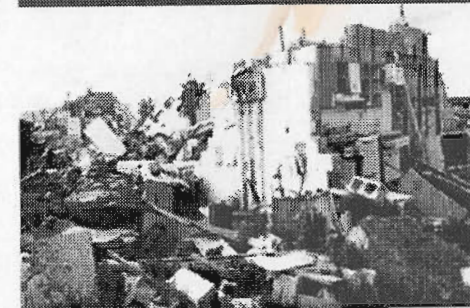
Level 2 - Major damage; habitable



Level 3 - Major damage; uninhabitable



Level 4 - Destroyed



## Call 3-1-1 to report damage.

**BR** **WARD**  
**COUNTY**  
**FLORIDA**

### Board of County Commissioners

Josephus Eggelation, Jr.

Sue Gunzburger

Kristin D. Jacobs

Ken Keechl

Ilene Lieberman

Stacy Ritter

John E. Rodstrom, Jr.

Diana Wasserman-Rubin

Lois Wexler

[www.broward.org/hurricane](http://www.broward.org/hurricane)

This public document was promulgated at a cost of \$96.00 or \$0.048 per copy to provide public information about the Home Damage Assessment Program.